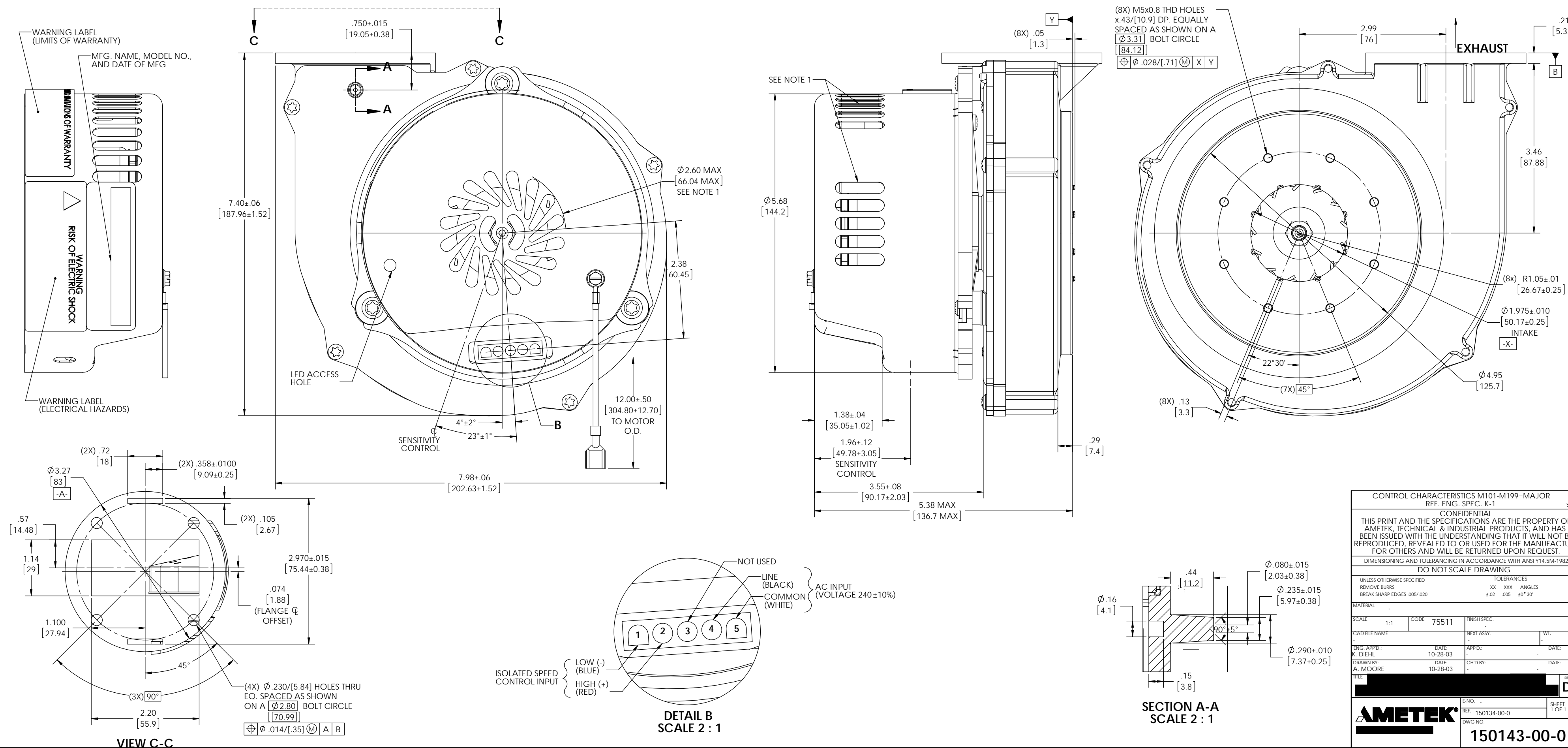


REVISIONS				
REV	ECN NO.	CHANGE	DATE	APP'D
F	105812	CONVERTED TO SOLIDWORKS AND REVISED PICTORIALY FOR INTEL 2. MH	8-24-13	KD

NOTES:

1. ALL INTAKE, EXHAUST, COOLING DUCTS AND VENTS MUST NOT BE OBSTRUCTED BY MOUNTING.
2. MOTOR VENTILATION AIR TO BE FREE OF OILS AND OTHER FOREIGN PARTICLES, (I.E. BREATHING QUALITY AIR). MOTOR TO BE MOUNTED SO THAT MOTOR VENTILATION AIR CANNOT RECIRCULATE.
3. **POWER CONNECTION:** BLOWER CONNECTOR USING AMP UNIVERSAL MATE-N-LOK PN# 640900-1 MATES WITH CUSTOMER SUPPLIED AMP CONNECTOR, PN#350809-1 WITH SOCKET TERMINALS AMP PN# 350874-1 OR EQUIV. ON 16GA. 125°C, 600V WIRE (BLACK & WHITE POWER LEADS).
4. **SPEED CONTROL CONNECTION:** BLOWER CONNECTOR MATES WITH CUSTOMER SUPPLIED CONNECTOR USING SOCKET TERMINALS 350851-1 OR EQUIV. ON 22GA 125°C, 600V WIRE (RED & BLUE SPEED CONTROL LEADS).
5. **GROUND LEAD:** GREEN/YELLOW LEAD, FULLY INSULATED FEMALE TERMINAL AMP P/N 2-520405-2 ON 18 GA. 1015 UL STYLE 105°C, 600V RATED WIRE.
6. TACH OUTPUT 2-PULSES PER REVOLUTION. SIGNAL IS A FREQUENCY (Hz) INDICATOR OF THE RPM, CAN BE MEASURED WITH RESPECT TO GROUND LEAD (BLACK WIRE). RPM=TACHOUT x 30.
7. ROHS AND REACH COMPLIANCE. REFERENCE AMETEK ENVIRONMENTAL SPECIFICATION ES0010 FOR DETAILS.



CONTROL CHARACTERISTICS M101-M199-MAJOR		REF. ENG. SPEC. K-1		SW
CONFIDENTIAL				
THIS PRINT AND THE SPECIFICATIONS ARE THE PROPERTY OF AMETEK, TECHNICAL & INDUSTRIAL PRODUCTS, AND HAS BEEN ISSUED WITH THE UNDERSTANDING THAT IT WILL NOT BE REPRODUCED, REVEALED TO OR USED FOR THE MANUFACTURE FOR OTHERS AND WILL BE RETURNED UPON REQUEST.				
DIMENSIONING AND TOLERANCING IN ACCORDANCE WITH ANSI Y14.5M-1982				
DO NOT SCALE DRAWING				
UNLESS OTHERWISE SPECIFIED		TOLERANCES		
REMOVE BURRS	XX	XXX	ANGLES	
BREAK SHARP EDGES 005/020	±.02	.005	±0° 30'	
MATERIAL				
SCALE 1:1	CODE 75511	FINISH SPEC.		
CAD FILE NAME		NEXT ASSY	WT.	
ENG. APP'D: K. DIEHL	DATE 10-28-03	APP'D:	DATE:	
DRAWN BY: A. MOORE	DATE 10-28-03	CHKD BY:	DATE:	
TITLE				
AMETEK				D
E-NO. REF. 150134-00-0				SHEET 1 OF 1
DWG NO. 150143-00-0				