

# PRODUCT PORTFOLIO

Bison<sup>®</sup>  
Gearmotors

Lamb<sup>®</sup>  
Vacuum Motors

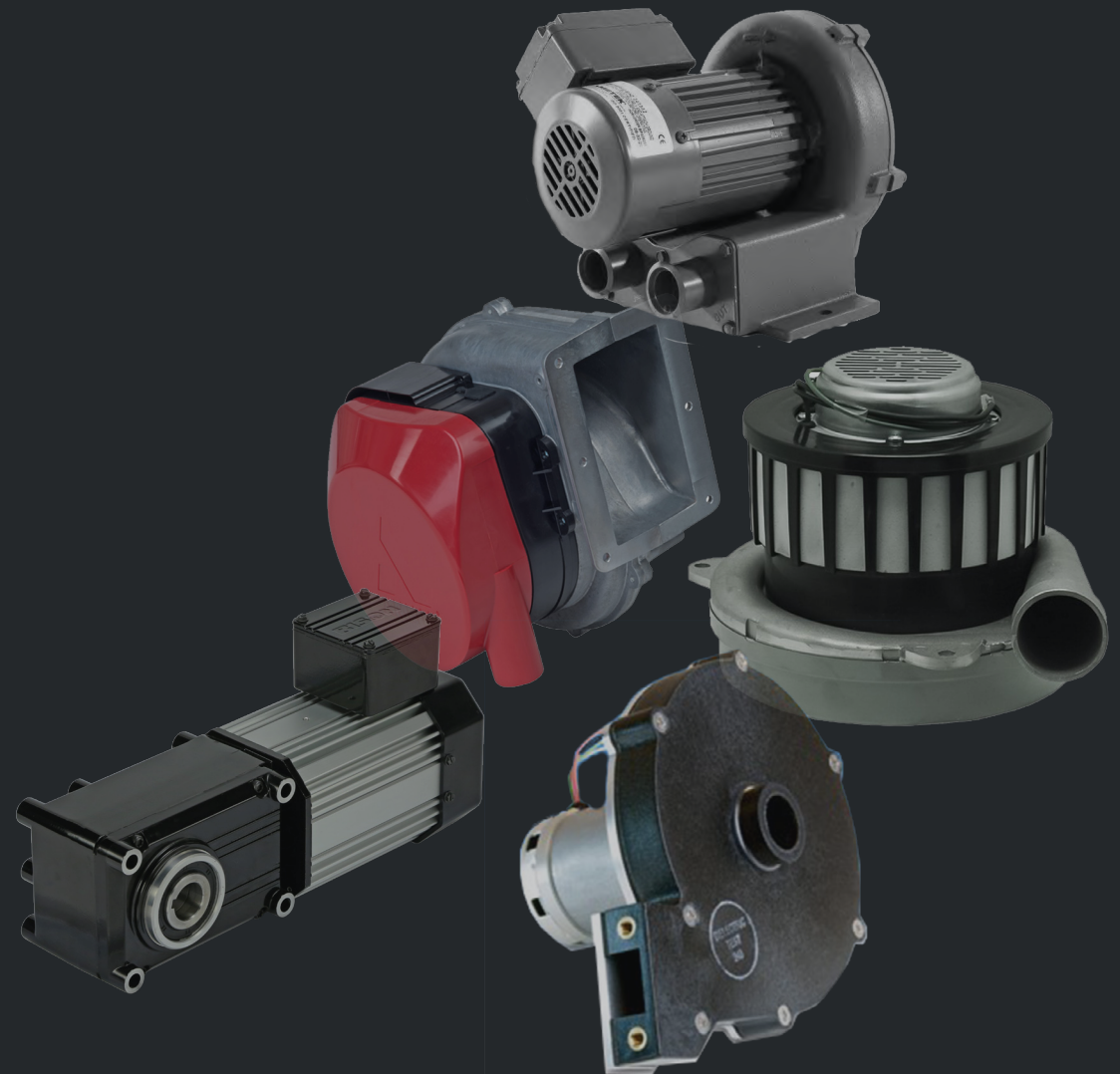
Nautilair<sup>®</sup>  
Combustion Blowers

Prestolite Motors  
Brushed DC Motors







ROTRON<sup>®</sup>  
Regenerative Blowers







ROTRON<sup>®</sup>  
Transportation

Windjammer<sup>®</sup>  
Brushless Blowers



# BLOWERS, PUMPS AND MOTORS

	PRODUCT TYPE		Input Power	Pressure	Flow	Existing Frame Sizes
Brushless Blowers / Vacuum	Nautilair® Pre-mix Combustion Blowers		AC, 120V single phase to 575V 3-phase DC, 12 & 24V	Sizes max out from 8 to 40 in-H <sub>2</sub> O	Sizes max out from 140 to 3500 CFM	7.6", 8.9", 9.5", 12.3", 14", 26"
	Windjammer®		DC, 12 to 48V	Sizes max out from 2 to 83 in-H <sub>2</sub> O	Sizes max out from 10 to 120 CFM	3", 3.3", 4.5", 5", 5.1", 5.7"
	Windjammer®		AC, 120V /240V	Sizes max out from 24 to 180 in-H <sub>2</sub> O	Sizes max out from 56 to 268 CFM	5.7"
	ROTRON® Regenerative Blowers		AC, 120V single phase to 460V 3-phase	Sizes max out from 14 to 200 in-H <sub>2</sub> O	Sizes max out from 13 to 1900 CFM	Many sizes from 1/8 HP to 40 HP
Sealless, Brushless Pumps	ROTRON® Transportation		DC, 12 to 24V	Sizes max out from 7 psi to 25 psi	Sizes max out from 10 to 30 gpm	3", 47 frame, 64 frame, SLP (10, 12, 18, 26, & 30 gpm)
Brushed Blowers / Vacuum	Lamb® Universal Motors		AC or DC, 12 to 240V	Sizes max out up to 280 in-H <sub>2</sub> O	Sizes max out up to 300 CFM	4", 4.2", 4.3", 4.8", 5.1", 5.4", 5.7", 6.6", 8.4", 9"

	PRODUCT TYPE		Input Power	Torque	Speed	Output Power	Existing Frame Sizes
Brushed DC Motors	Prestolite Motors PMDC		DC, 12 to 48V AC, 120/240V (CPM)	Sizes max out from 10 to 101 in-lb	Sizes max out from 700 to 9,000 rpm	Sizes max out from 130W to 2010W	3.06", 3.09", 3.13", 3.26", 3.29", 4.00", 4.50", 4.72"
	Bison® PMDC		DC, 12 to 180V	Sizes max out from 7 to 94 in-oz	Sizes max out from 1,800 to 4,200 rpm	Sizes max out from 26 to 345W	26 frame, 32 frame
	Prestolite Motors Wound-Field DC		DC, 12 to 48V	Sizes max out from 10 to 192 in-lb	Sizes max out from 3,000 to 6,500 rpm	Sizes max out from 250W to 5,890W	3.67", 4.5", 5"
Brushed Universal Motors	Lamb® Universal Motors		AC or DC, 12 to 240V	Sizes max out at 120 oz-in continuous and 1,000 oz-in peak	Sizes max out up to 50,000+ rpm	Sizes max out up to 2,000W	2.43", 60mm, 2.67", 2.9", 3", 3.5", 3.67"
AC Sync Motors	Bison® VFSync		AC, 230/460V 3-phase	Sizes max out from 9 to 53 in-lb	Sizes max out at 1,800 rpm	Sizes max out from 187 to 1,118W	IEC 71, 80, 90, and NEMA 56
Brushless DC Motors	ROTRON® Transportation		DC, 12-72V	Sizes max out from 30 in-oz to 67 in-lb	Sizes max out from 1,160 to 5,475 rpm	Sizes max out from 80 to 300W	64 frame, 47 frame, 3"

# GEARMOTORS

	Product Type		Input Power	Torque	Speed	Output Power	Product Series
AC Gearmotors	Bison® Spur & Helical Gear Parallel Shaft		AC, 115V single phase to 460V 3-phase	Sizes max out from 10 to 1,087 in-lb	Sizes max out from 1 to 340 rpm	Sizes max out from 9W to 1/2 HP	VWDIR14, VWDIR08, VWDIR88, 100, 175, 200, 242, 246, VWDIR20, VWDIR84, 650, VWDIR40, 480
	Bison® Spur & Helical Gear Parallel Shaft - Stainless IP69K Washdown		AC, 230/460V	Sizes max out from 5 to 500 in-lb	Sizes max out from 0.5 to 528 rpm	Sizes max out from 1/20 to 1/7 HP	49 frame
	Bison® Worm Gear Right Angle - Stainless IP69K Washdown		AC, 230/460V	Sizes max out from 248 to 2,921 in-lb	Sizes max out from 17.2 to 250 rpm	Sizes max out from 1/4 to 2 HP	IEC 63, NEMA 56
	Bison® Spur & Helical Gear Offset Parallel Shaft		AC, 115/230V	Sizes max out from 66 to 2,500 in-lb	Sizes max out from 1.2 to 65 rpm	Sizes max out from 1/20 to 1/2 HP	562, 762 Series
	Bison® Worm Gear Right Angle		AC, 115/230V	Sizes max out from 11 to 250 in-lb	Sizes max out from 1 to 330 rpm	Sizes max out from 1/12 to 1/4 HP	750, 756, VWDIR33
	Bison® Hypoid Gear Right Angle		AC, 115/230V	Sizes max out from 10 to 1,730 in-lb	Sizes max out from 7 to 168 rpm	Sizes max out from 1/20 to 1/2 HP	712, 720, 725, 730
DC Gearmotors	Bison® Spur & Helical Gear Parallel Shaft		DC, 12 to 130V	Sizes max out from 8 to 1,112 in-lb	Sizes max out from 1 to 520 rpm	Sizes max out from 1/40 to 1/2 HP	VWDIR83, 100, 175, 336, 348, VWDIR84, 650, 483
	Bison® Worm Gear Right Angle		DC, 12 to 130V	Sizes max out from 9 to 250 in-lb	Sizes max out from 3 to 520 rpm	Sizes max out from 1/20 to 1/4 HP	746, 750, 756, VWDIR23 series
	Bison® Spur & Helical Gear Offset Parallel Shaft		DC, 90V	Sizes max out from 66 to 1,529 in-lb	Sizes max out from 1.3 to 65 rpm	Sizes max out from 1/20 to 1/2 HP	562, 762 Series
	Bison® Hypoid Gear Right Angle		DC, 12 to 90V	Sizes max out from 10 to 1,198 in-lb	Sizes max out from 7 to 250 rpm	Sizes max out from 1/30 to 1/3 HP	712, 720, 725, 730 series
Universal Gearmotors	Bison® Worm Gear Right Angle		DC or AC, 115V	Sizes max out from 18 to 250 in-lb	Sizes max out from 4 to 90 rpm	1/15 HP	VWDIR03

## Newly formed Bison® combines AMETEK Dynamic Fluid Solutions and Bison Gear & Engineering Corp. offering customers...

- An expanded product portfolio
- Accelerated time to production
- Global insights and worldwide manufacturing flexibility



### Design Expertise

Leverage hundreds of years of design expertise and in-depth applications knowledge.



### Customizable Solutions

Work with our engineers as an extension of your team and tailor solutions to meet your needs.



### Integration Support

Ensure that your end product not only functions properly, but that performance is also optimized.

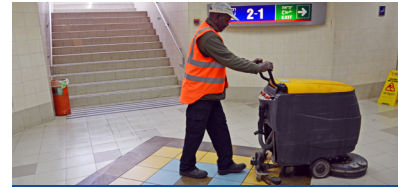
## Powering hundreds of applications within the following markets:



Combustion



Ag & Construction



Floorcare



Energy



Heavy-Duty Vehicles



Food & Beverage



Specialized Industrial



Transportation